

A5X Series A5X403/A5X404

A5X Series

MACHINE SPECIFICATIONS

	Unit	A5X403	A5X404	
Table size	mm	Ø255	Ø320	
Max. Table load	kgf	50	75	
Max. Workpiece dimension (Ø x height)	mm	Ø360 x 250	Ø448 x 250	
Min. indexing precision of C axis rotary	degree	0.001	0.001	
Cumulative indexing precision of A, C axis	sec	50 / 15	45 / 15	
Repeatability accuracy of A, C axis	sec	8 / 4	8 / 6	
Slope angle of A axis	degree	±110	+120 / -40	
Max. Speeds for A, C axis	rpm	16.6 / 25	13.3 / 22.2	
X, Y, Z axis travel	mm	400 x 500 x 400	400 x 500 x 450	
3 axes rapid traverse	m/min	48 / 48 / 48	48 / 48 / 48	
3 axes bidirectional accuracy of positioning	mm	VDI 3441	VDI 3441	
3 axes bidirectional repeatability of positioning	mm	VDI 3441	VDI 3441	
Spindle speeds	rpm	10000	8000	
Spindle taper		BT30	BT40	
Pull stud		MAS 403 P30T-1(45°)	MAS 403 P40T-1(45°)	
Spindle driving		Direct-drive		
Spindle nose to table	mm	30 ~ 430	40 ~ 490	
Spindle center to Z path	mm	570	570	
Spindle motor	Mitsubishi	kw	5.5 / 3.7	7.5 / 5.5
	Fanuc	kw	5.5 / 3.7	7.5 / 5.5
	Siemens	kw	5.6 / 3.7	10.5 / 7.0
X drive motor	Mitsubishi	kw	1.5	2.2
	Fanuc	kw	1.6	2.7
	Siemens	kw	2.3	2.3
Y drive motor	Mitsubishi	kw	1.5	3.0
	Fanuc	kw	1.6	3.0
	Siemens	kw	2.3	3.3
Z drive motor	Mitsubishi	kw	3.0	3.5
	Fanuc	kw	3.0	4.0
	Siemens	kw	3.3	4.8
A drive motor	Mitsubishi	kw	1.5	3.5
	Fanuc	kw	1.6	4.0
	Siemens	kw	2.3	3.3
C drive motor	Mitsubishi	kw	1.0	1.5
	Fanuc	kw	1.0	1.6
	Siemens	kw	2.3	2.3
Tools capacity	tools	20+1	24+1	
Max. tool weight	kg	4	5	
Max. tool length	mm	200	250	
Max. tool diameter (alternate pocket empty)	mm	60 (80)	80 (120)	
ATC time (T-T)	sec	2.2	2.4	
Tool Change type		Arm type		
Tank volume	L	260	260	
Chip flush type		Flushing type		
Auto. Chip conveyor		OP		
Net weight	kg	3900	4300	
Floor space	mm	1970 x 3032 x 2700	2170 x 3032 x 2657	



**EXCELLENCE
THROUGH
EXPERTISE**



CONTROLLER SPECIFICATIONS

O : Standard OP : Option

	Mitsubishi	Fanuc	Siemens
Max. simultaneous axis	4	4	4
Standard controlled axis	5	5	5
Program storage length	500kb	512kb	3M
Work piece coordinates	54	54	100
Max. variable number	700	600	300
Tool offset pairs	400	400	128/256
Conversational programming	NAVI	Manual guide Oi	Program Guide Shopmill (OP)
Monitor	8.4" TFT LCD		10.4" TFT LCD
Multi-language display	O	O	O
ABS servo motor	O	O	O
Tool length compensation	O	O	O
Tool path compensation	O	O	O
On-screen drafting	O	O	O
High speed data server & ethernet	O	OP	O
High speed & high accuracy machining control mode	G05 P20000	G05.1 Q1	Cycle 832
Interface	RS232 / RJ45		RJ45
Memory card input / output	O	O	O

★ Tool change time supplied with standard 60Hz power.
For electrical requirements other than this standard, please contact one of our personnel.

RES·SEIKI



ARES MACHINERY CO., LTD.

A5X403/A5X404
5-axis CNC Tapping Center

RES·SEIKI

No. 256, Tu-Cheng Rd., Da-Li, Taichung, Taiwan 41274

Tel: +886-4-2492-5555 ares999@ms16.hinet.net

Fax: +886-4-2496-6959 www.ares-seiki.com



ARES: A5XIC-04-M0Y0A-1000

A5X403

5-axis CNC Tapping Center



A5X404

5-axis CNC Tapping Center

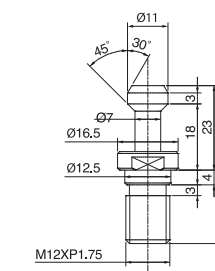


Compact mechanical construction & 3 axes are equipped with roller guide ways suitable for medical equipment, aerospace equipment, 3C, automobile, motorcycle...etc.

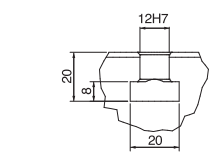
A5X Series A5X403/A5X404

MACHINE DIMENSIONS

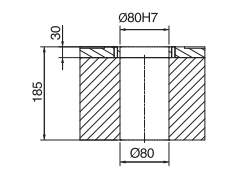
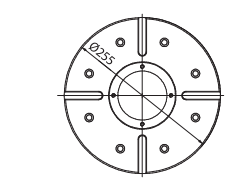
A5X403



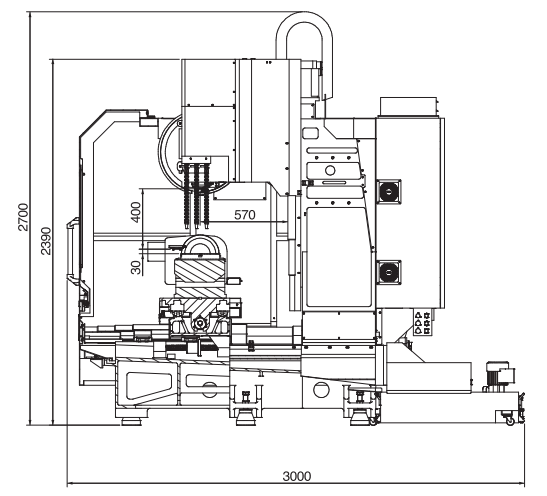
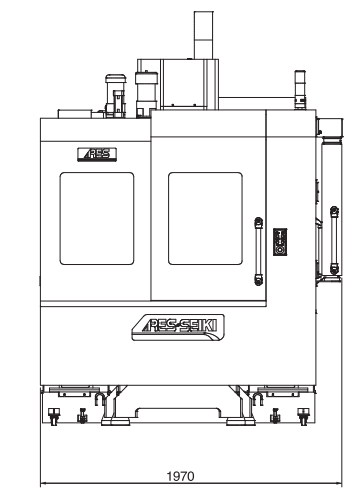
MAS 403-P30T-1



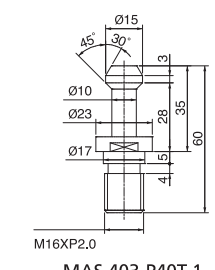
T-Slot Specifications



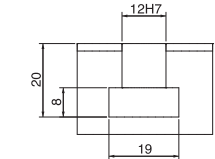
Sectional Drawing for Center Hole of Rotation Axis



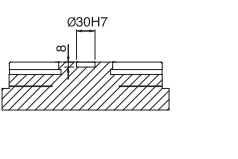
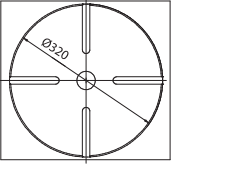
A5X404



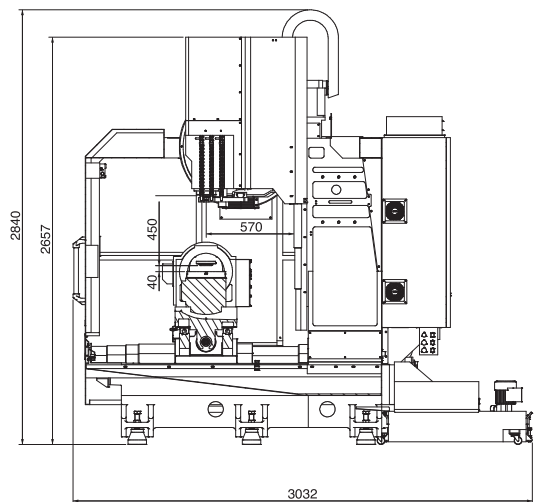
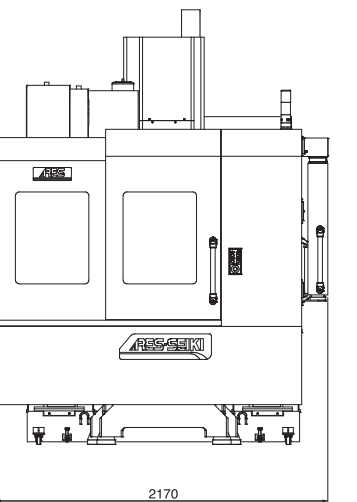
MAS 403-P40T-1



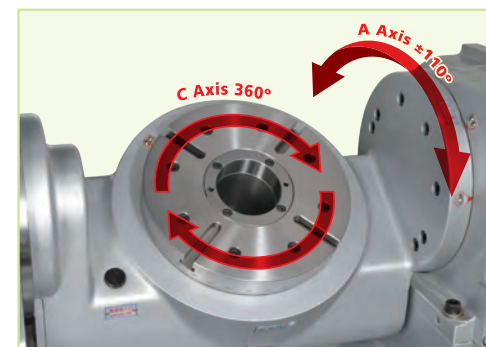
T-Slot Specifications



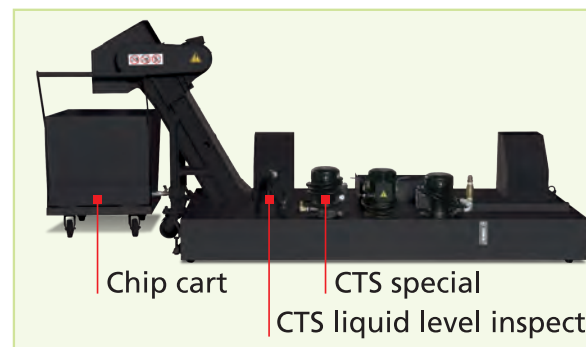
Sectional Drawing for Center Hole of Rotation Axis



★ The company reserves the right to modify the specifications / design, subject to change without further notice. Actual specifications, based on order content.



- Rotary table diameter Ø255mm
- A, C axis are driven by servo motor
- Hydraulic brake system



- Options:
- Auto. chip conveyor system
 - CTS device



- Rotary table diameter Ø320mm
- A, C axis are driven by servo motor
- Hydraulic brake system

Standard accessories

- Auto. Lubrication system
- Tool coolant system
- Direc drive spindle system
- Auto chip purging system
- High speed arm type tool change system
- 3 axes with roller guide
- Spindle air blow system
- Dual electric cases (Heat insulated)
- LED Work light
- Triple-color alarm light
- TFT LCD
- Toolbox and tools
- Leveling bolts and pads

Optional accessories

- Tilted work plane (Fanuc)
- 5 axis simultaneous (SIEMENS 840D)
- Spindle speed
BT30:12000/15000/20000/24000 rpm
BT40:12000/15000
High speed spindle (With spindle oil cooling system)
- Coolant through spindle(CTS)
- Full enclosed splash guard (Top Cover)
- Transformer/stabilizer
- Chip conveyor with cart
- CTS filtration
- Oil/water partition
- Oil mist collector
- Water gun
- Air gun
- Auto. Door
- Auto. Tool length measurement
- Damaged cutting tool sensor
- Work piece air blow system
- CE